

# TMA

## Telindus Maintenance Application

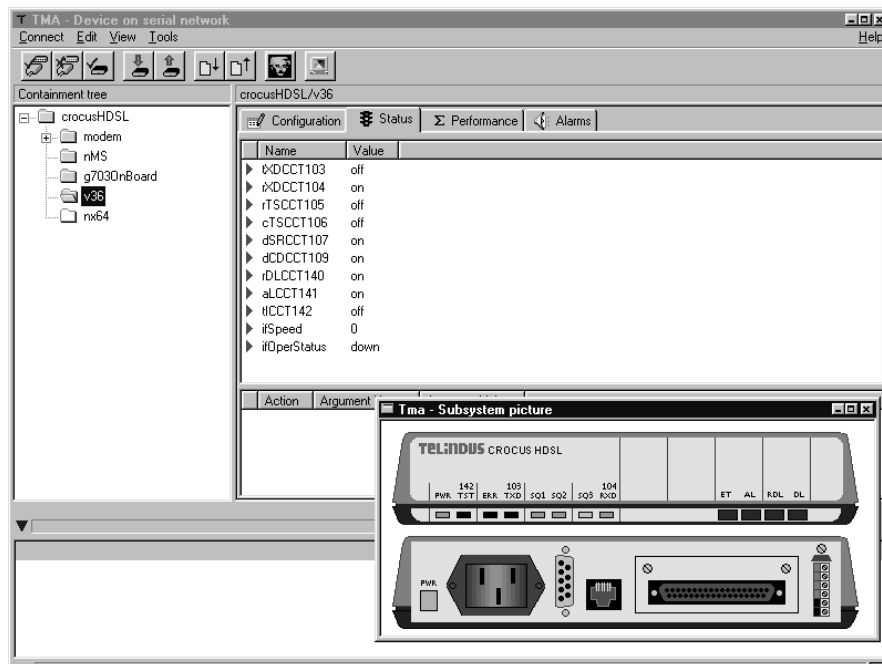
Free Maintenance  
Software

Fast and easy installation of Telindus equipment

•  
Powerful maintenance tool

•  
Graphical user Interface

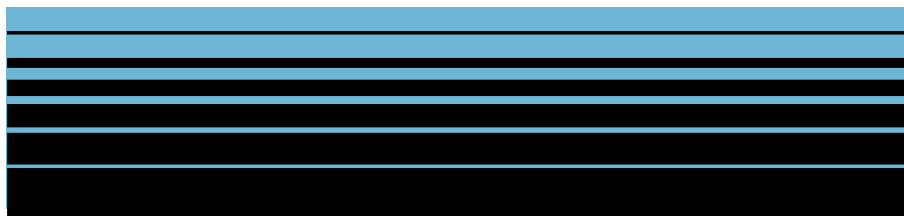
•  
Support for different network topologies

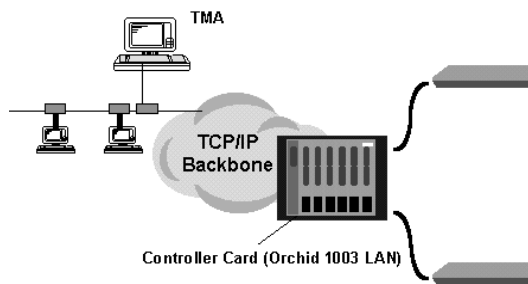


**TMA** (Telindus Maintenance Application) is a free Windows® software for the complete control of local and remote installed Telindus access equipment. It is a more performant alternative for the classical (dip-switches, LCD or VT100) local configuration tools. The system offers not only configuration of the equipment, but also includes the creation of configuration profiles stored on the hard-disk, a completely interactive picture of the connected device, real-time monitoring, interrogation and export of status and statistics, test-loop facilities, etc..

One possibility to make a maintenance connection to a device is a straight serial cable between the equipment and the PC. It will provide the **TMA** access to the locally and remotely installed equipment (including also possible extensions of the link).

Other topologies include the maintenance concentration through a concentration device (Orchid 1003 LAN), extending the maintenance access to a large number of network elements from one central location. The Orchid 1003 LAN can also be configured as a TCP/IP proxy, which will make any network element accessible as an IP device.





TCP/IP connectivity to an Orchid 1003 LAN

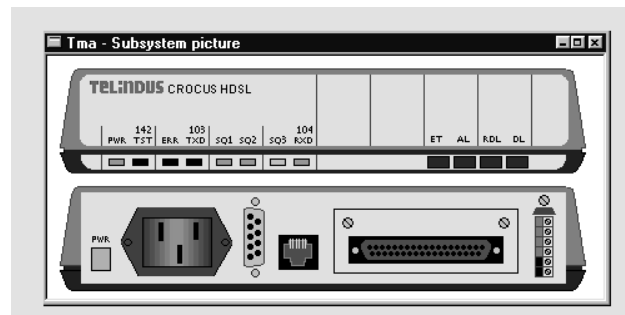
In the development of the software package, user-friendliness and ease of operation were set as primary design goals. This resulted in features like a *menu navigation window*, selection between basic and advanced views, MRU (Most Recent Used) list of connected equipment (for a fast selection of the desired equipment to connect to), etc..

In larger networks, TMA can be used simultaneously with a centrally installed management system, and allows an optimal interaction between network operator and field-engineer.

TMA is the ideal support tool for the field-engineer, optimising the speed and efficiency of the installation. The software is delivered with the equipment, and at all times, the latest version can be downloaded from the Telindus web-site.



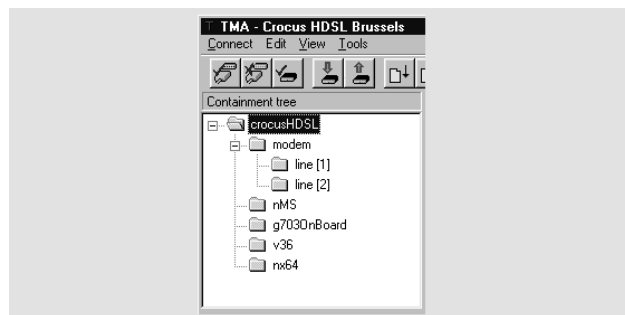
Toolbar



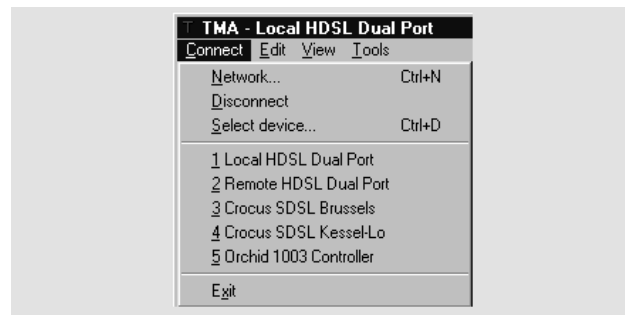
Interactive picture

r2LineParameters						
	validity	period	lineAttenuationMin (dB)	lineAttenuationMax (dB)	lineAttenuationAvg (dB)	noiseMarginMin (dB)
▶ 1	invalid	not present	0.0	0.0	0.0	0.0
▶ 2	valid	-105min -> -90min	0.0	63.0	2.5	-16.0
▶ 3	valid	-90min -> -75min	1.0	2.0	1.5	10.5
▶ 4	valid	-75min -> -60min	1.0	2.0	1.5	6.5
▶ 5	valid	-60min -> -45min	1.0	2.0	1.5	9.0
▶ 6	valid	-45min -> -30min	1.0	2.0	1.5	6.5
▶ 7	valid	-30min -> -15min	1.0	2.0	1.5	15.5
▶ 8	valid	-15min -> 0min	1.0	2.0	1.5	6.5

Equipment statistics



Menu navigation window



MRU (Most Recent Used) list

## TECHNICAL SPECIFICATIONS

### System functionalities

- Establishment and termination of the connection with an equipment (either local or remote).
- Password protected access.
- Reading and changing configuration of the equipment
- Real time monitoring (e.g. of interface signals or line parameters)
- Retrieving status information (current operation) of the equipment, including the current alarm status
- Retrieving statistical information on the modem (e.g. covering a period of 24 hours)
- Diagnostic tests
- Configuration storage and retrieval on hard-disk
- Statistics storage and retrieval on hard-disk

- Software download to equipment with flash-memory (software upgrades)
- Interactive pictures reflecting the equipment and the status of indicators and push-buttons

### Minimum system requirements

- IBM Compatible PC
- 4 Mb free hard-disk space
- 16 Mb RAM
- Diskette drive 3 1/2"
- One serial communication port
- Mouse
- MS Windows95® or Windows NT 4.0®

Note: Telindus may make improvements and/or changes in the products described above at any time, without notice and shall in no way be held responsible for errors in this document.

Your Distributor

# TELINDUS

Geldenaaksebaan 335 • B-3001 Heverlee • Belgium  
Tel +32/16-38.20.11 • Fax +32/16-40.01.02

web-site <http://www.telindus.com>