

# CROCUS HS



## FEATURES & BENEFITS

- > SYNCHRONOUS HIGH-SPEED BASEBAND MODEM FOR 2-WIRE UNCONDITIONED, UNSHIELDED TWISTED-PAIR CABLES.
- > UP TO 9 KM AT 144 KBPS OVER 0.5-MM CABLE WITHOUT REPEATERS
- > POWERFUL 2B1Q LINE-CODING SCHEME
- > USER SELECTABLE DATA RATES FROM 48 KBPS TO 144 KBPS
- > CENTRAL SITE HIGH-DENSITY CARD-NESTS FOR UP TO 30 MODEMS
- > MODULAR PLUG-IN DATA INTERFACES FOR MAXIMUM FLEXIBILITY AND EFFICIENT STOCK MANAGEMENT

## > THE CROCUS HIGH SPEED (HS) IS A MANAGEABLE BASEBAND MODEM FOR DIGITAL SUBSCRIBER LINES OR PRIVATE COPPER NETWORKS.

The modem offers multiple user speeds between 48 and 144 kbps for operation over a single unconditioned, unshielded twisted pair. Through a powerful 2B1Q line-coding scheme and adaptive line equalisation, the Crocus HS covers long distances without the need for expensive repeaters or pair selection.

### LINE INTERFACE

- > Single pair line access
- > Impedance: 135 ohm
- > Coding: 2B1Q conform ANSI T1.601
- > Modulation rate: 160 kbps
- > Line connection: RJ12 on desktop model screw connections on rack-mount version
- > Transmit level: 13.5 dBm
- > Performance: distance covered noise free (independent of the speed)

WIRE DIAMETER		DISTANCE (KM)
0.4 mm	26 AWG	6.9
0.5 mm	24 AWG	9.5
0.6 mm		13.5
0.8 mm	20 AWG	17.5
1.0 mm	18 AWG	26.0

### MANAGEMENT INTERFACE (MANAGEABLE VERSIONS ONLY)

- > Desktop versions: 9600 bps asynchronous (RJ45)
- > Rack-mount versions: Synchronous high-speed bus (RJ45)

### FRONT PANEL

- > Testloops AL: Analogue Loop  
RDL: Remote Digital Loop  
DL: local Digital Loop  
ET: Integrated Error Test generator (conform V.52)
- > Indications PWR: Power  
TST: Test indicator (circuit 142)  
ERR: Error Test error indication - AIS for G.703  
DCD: Data Carrier Detect (circuit 109)  
TXD: Transmit Data (circuit 103)  
RXD: Receive data (circuit 104)

### DIGITAL INTERFACES

- > V.35 User speed: 48,56,64,72,96,112,128,144 kbps
- > V.36/RS-449 User speed: 48,56,64,72,96,112,128,144 kbps
- > X.21 User speed: 48,56,64,72,96,112,128,144 kbps
- > RS-530/RS-530A User speed: 48,56,64,72,96,112,128,144 kbps
- > V.24/RS-232 User speed: 48,56,64,72,96,112,128,144 kbps
- > G.703 User Speed: 64 kbps (co-directional)
- > IP Router 2M\* User Speed: 48,56,64,72,96,112,128,144 kbps
- \* When used in the Crocus HS, the router requires a BootP server or TMA software for initial configuration

### MECHANICAL DATA (H X W X D)

- > Desktop versions: 50 x 200 x 350 mm weight: 1.4 kg
- > Rack-mount versions: 235 x 20 x 300 mm weight: 1 kg

### POWER REQUIREMENTS

- > Desktop versions: 230Vac +/-10% 50-60 Hz 30 mA  
115Vac +/-10% 50-60Hz 60 mA  
48Vdc (36Vdc - 72Vdc) 30 mA
- > Rack-mount versions: 48Vdc (36Vdc - 72Vdc) 60 mA (Twin)

### SALES CODES

- > 142192 Crocus HS NMS Cent. TT BU 230/115VAC
- > 142194 Crocus HS /NMS-REM/ TT BU 230/115 VAC (no management connector)
- > 142193 Crocus HS NMS Cent. TT BU 48VDC
- > 142195 Crocus HS /NMS-REM/ TT BU 48VDC (no management connector)
- > 142191 Crocus HS NMS Twin-CV BU

### SALES CODES: INTERFACES

The equipment uses transparent data interface modules as found in the sales codes quick reference section

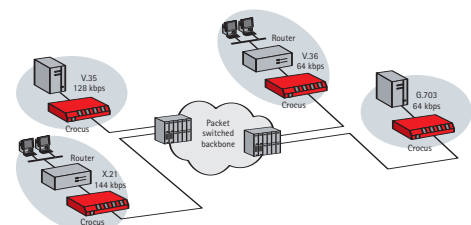
A complete range of plug-in interface boards makes the Crocus HS ideal for interfacing with almost any application. Not only traditional serial interfaces such as V.24, V.35, V.36, RS-530 and X.21, but also G703 (64 kbps co-directional) and direct Ethernet 10BaseT connections with integrated bridge or router functionality are available. All these interface boards can be exchanged in only a few seconds.

For large concentration sites, rack-mounted versions are mounted in a standard 19" card-nest with densities up to 30 modems per nest.

Both 230/115 Vac and direct 48 Vdc powering can be used.

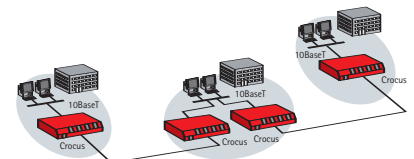
In addition, all Crocus modems in the network can be managed in an integrated way by a high-performance SNMP based management system (HP OpenView®). The integrated management enables one to configure the modem remotely, to query the actual status of the modems, to permanently monitor the performance (real-time and statistical information), to perform fault analysis, and to report alarms to the operator.

### PACKET SWITCHED BACKBONE ACCESS



The Crocus HS is ideally suited for medium-speed backbone access (like X.25 and Frame-Relay), professional high-speed Internet access, LAN-to-LAN connections, and other bandwidth-demanding applications. All versions come as a desktop unit or as a dual rack-mounted card.

### CAMPUS LAN INTERCONNECTIVITY



MORE INFO:  
TELINDUS  
Geldenaaksebaan 335  
B-3001 Heverlee  
Belgium

TEL +32 16 38 20 11  
FAX +32 16 40 01 02  
E-MAIL productinfo@telindus.com  
www.telindusproducts.com

**TELINDUS**  
broadband solutions