

# Crocus Router 10M Interface



The Crocus Router 10M interface adds professional integrated routing and bridging functionality to a wide range of Crocus products, including SHDSL, fibre-optic and multiplexing equipment.

## CROCUS ROUTER 10M INTERFACE

By effectively embedding routing and bridging in the transmission or interface conversion unit, the solution can drastically reduce the global investment and operational costs for LAN connectivity over TDM based networks.

The Crocus Router 10M Interface is fully supported by the TDRE (Total Dynamic Routing Engine) and includes the possibility for encapsulation into Frame Relay or PPP.

The unit comes with a direct Ethernet auto-sense 10/100 Base-T connection and supports differentiated services based on VPNs (Virtual Private Networks). For this reason, it integrates features like L2TP (Layer 2 Tunnelling Protocol), 802.1Q (VLAN tagging) and QOS (Quality Of Service) based on Diffserv.

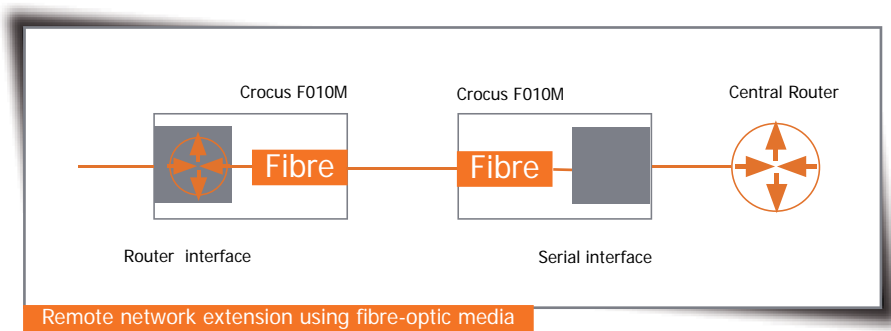
The unit is designed for integration into demanding network environments and can be controlled by the complete set of network maintenance and management tools that are part of the TDRE.

The Crocus Router 10M interface supports auto install features over the WAN network. This makes it ideally suited for plug-and-play installation at customer premises while the configuration is prepared at a central site.

### FEATURES AND BENEFITS

- LAN interface for the Crocus product family
- LAN interconnect with speeds up to 10 mbps
- 10/100 auto-sense Ethernet interface
- IP routing and bridging
- Class of service routing
- VLAN interconnect
- Frame Relay and PPP WAN encapsulation
- Built-in L2TP security
- Fully manageable with a variety of tools





### CROCUS ROUTER 10M INTERFACE SPECIFICATIONS

#### LAN interface

- Compliant with IEEE 802.3 10 Mbps Ethernet
- Compliant with IEEE 802.3u 100 Mbps Ethernet
- 10/100 Mbps auto-sense
- RJ45 Unshielded Twisted Pair (UTP)

#### Front panel Indications

- LAN / ACT: LAN status
- SERIAL / ACT: WAN layer 2 status

#### Supported WAN encapsulation protocols

- Frame Relay
- PPP

#### IP Routing and bridging

- Conform TDRE (Total Dynamic Routing Engine)

#### Routing and Bridging Performance

- Full forwarding performance of 64 byte packets at maximum interface speed
- Routing performance: 45.000 pps
- Bridging performance: 36.000 pps
- Supported number of Frame Relay DLCIs: 200
- Supported number of VPN tunnels: 10
- Supported number of VLANs: 200
- Supported number of bridge-groups: 13

#### Maintenance and management support

- Conform TDRE (Total Dynamic Routing Engine)

#### Memory

- Flash memory: 8 Mbyte
- RAM: 16 Mbyte

#### Mechanical data

- H x W x D: 25 x 88 x 105 mm
- Weight: 100 g

#### Sales Code

> 197285 Router Intf.10M Crocus

